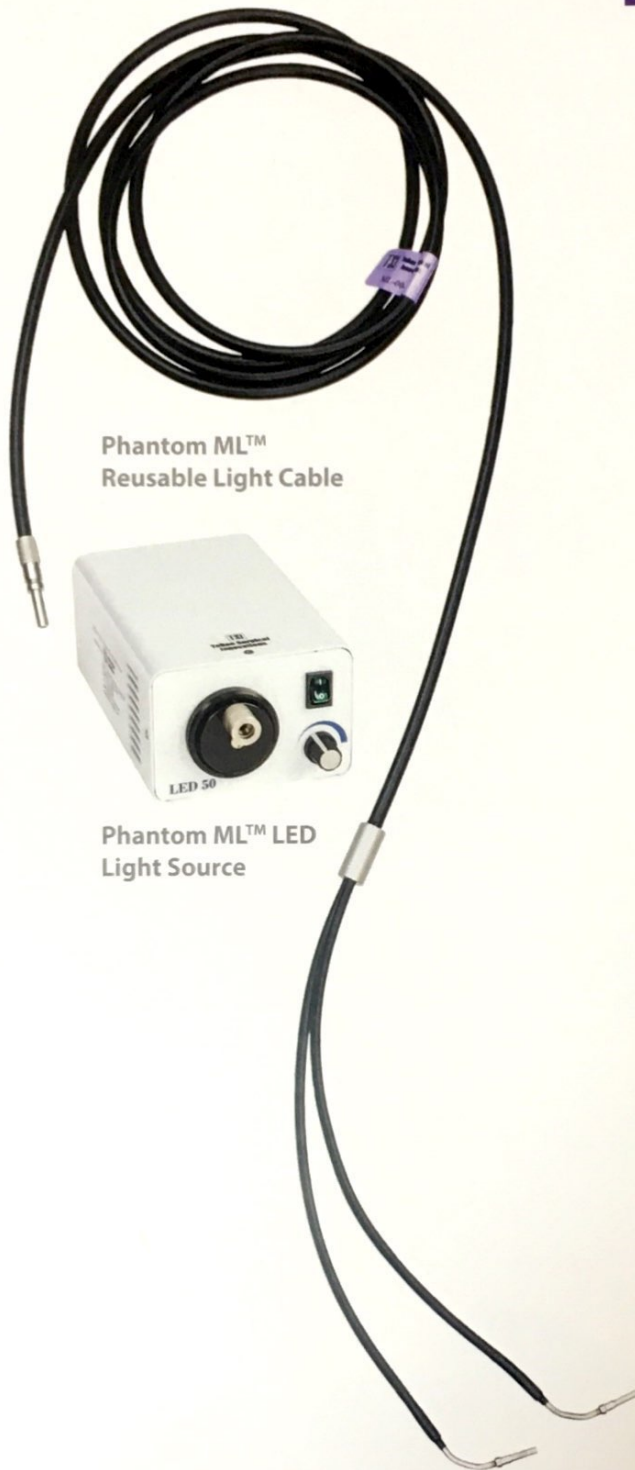


# PHANTOM ML™ LIGHTING SYSTEM

**TSI** TeDan Surgical  
Innovations

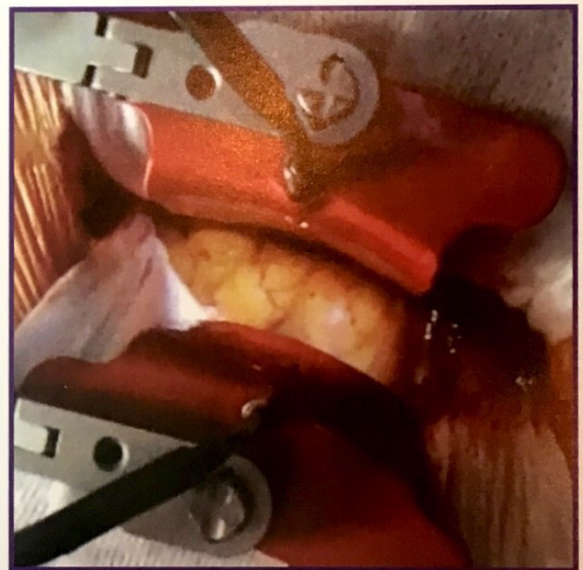


Phantom ML™  
Reusable Light Cable

Phantom ML™ LED  
Light Source



Light cable in retractor blades with light off



Light cable in retractor blades with light on

## Features

- Provides direct illumination of surgical site
- Reduces fatigue caused by extended wear of surgical head light
- Bright 52-watt LED light provides bright exposure with minimal heat output

**Phantom ML™ Light Cables and Light Source**  
Provide superior illumination of the surgical site.



**Strong Curve vs. Regular Curve:**

Different tip angles provide proper fit into the product's light channel.

**ML-0048**  
- Strong curve  
- For use with ML Tubes, CT Retractor Blades, HS-0305

**ML-0045, ML-0047**  
- For use with CS, LS, ML, MC Retractor Blades



**ML-0051 Phantom ML™ LED Light Source**  
- Bright, 52-watt LED light source, cool light  
- Ultra Small Footprint (7 1/8" x 4 1/2" x 3")



**Sterile, Single Use Light Cable:**

**ML-0046 Phantom ML™ Light Cable w/ TeDan Connector**  
- Sterile, Single Use Only

*For the brightest light every time*

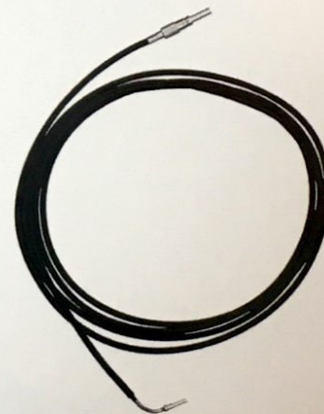
**Reusable Light Cables:**



**ML-0045 Phantom ML™ Light Cable w/ TeDan Connector**  
- Reusable



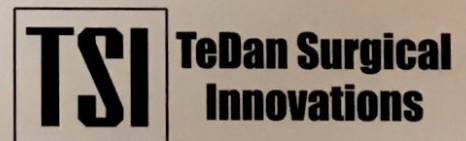
**ML-0048 Phantom ML™ Light Cable Strong Curve w/ TeDan Connector**  
- Reusable



**ML-0047 Phantom ML™ Light Cable Single Ended w/ TeDan Connector**  
- Reusable  
- Designed for use during procedures in which only one lighted blade is utilized  
- Ideal for use with lighted MC blades when performing microdissectomies or hemilaminectomies

**CONTACT US**

TeDan Surgical Innovations, LLC  
12615 W. Airport Blvd, Suite 200 • Sugar Land, TX 77478  
Ph: 713-726-0886 • Fax: 713-726-0846 • Toll Free: 877-726-0886  
www.tedansurgical.com • sales@tedansurgical.com



LIT-0083, REV 0 ©TSI 2015